

ABET LAMINATI



*Unlimited Selection*

**FULL UK PRODUCT RANGE**



HIGH PRESSURE LAMINATE SHEETS / COMPACT GRADE • EXTERIOR GRADE PANELS  
FLOORING / ACCESS FLOORING • WALL / ACOUSTIC PANELS • LIGHTWEIGHT HONEYCOMB PANELS  
LABORATORY SURFACES • SOLID SURFACING • RECYCLED PRODUCTS

# HIGH PRESSURE LAMINATE PRODUCT RANGE

## A brief outline of ranges for Print laminates

**COLORPACT** - Solid colour the whole way through the core in finish SEI texture

**COLOURS** - Good spectrum of plain colours available in finish SEI as standard

**COLOURS AND TEXTURES** – Plain colour range with five standard textures

**DECORI MINIMI** – Plain colours with a speckled or metallic effect in SEI and Mandarin textures

**DIAFOS** – Translucent laminates in plain colours and patterned finishes, both backed and unbacked

**FIBRE** – An environmentally-friendly natural-looking range with fibres sprinkled randomly over the surface

**HR LAQ** –Vibrant plain colours with an extra durable gloss finish suitable for horizontal surfaces

**I FINTI** –A range of photographic images of granites, marbles and pebbled effects

**INTERNI** – Backing laminates suitable for use as a balancer for the inside of furniture

**IRIDESCENTI** – A vertical grade laminate which gives a two-tone effect depending on light reflection

**KALEIDOS** – Exciting dramatic 3D effect laminate with four effects, each in four colourways

**LEGNI** –Vast selection of photographic images of woodgrains with various textures

**LEGNI SPECIALI** – Non-standard woodgrains such as stained, bird's eye maple and blocked effects

**METALLI** – Metallic finishes in various textures and colours

**METAL PRINT** – A vertical range with silver foil applied to plain Colours, Diafos, Metallic and Woodgrain finishes, with bubble or grille shaped cut-outs

**NEWYORK** – Plain colours with a mottled effect in a longline texture

**I PERLACEI** –A range of plain colours with a pearlescent shine to the surface in Mandarin texture

**PRINTWOOD** –A range of real wood veneer laminates, featuring a layer of veneer finished with a melamine overlay

**SERIE CRESP** – Heavily textured range with two finishes, similar to artex and corrugated cardboard effects

**SERIE MILANO** – Plain colours with mottled and speckled finishes within each colour set in a Soft finish

**SERIE STARS** –A range of metallic speckles with a Lucida and Mandarin texture per colour set

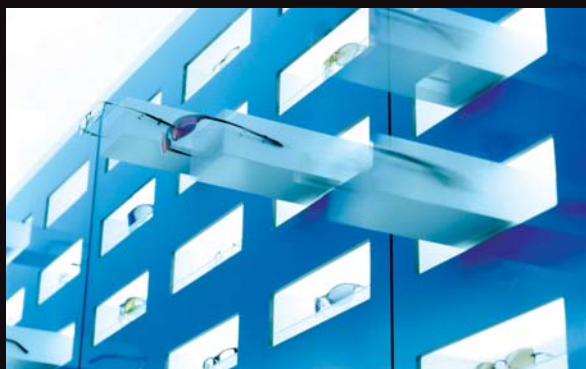
**SERIGRAFIA** – Screen printed colourful images in finish SEI and and Longline textures

**SILVER** – High gloss vertical mirrored laminate with embossed patterns underneath the surface

**SUPERFICI** – A swatch showing the range of surface textures available

**VERTICAL LINE** –Vertical grade range with two effects mimicking metallic textures and marble effects

**WALKPRINT** – Access flooring in a variety of décors, available in full sized sheets or tiles



# HIGH PRESSURE LAMINATE PRODUCT RANGE

A brief outline of ranges for Print laminates

## SPECIALIST PRODUCTS

**MEG (MATERIAL EXTERIOR GRADE)** – An exterior self-supporting compact grade laminate available from 2mm thickness upwards. Available in selection of plain colours, woodgrains, metallics and concrete finishes

**CUBICLES** – A collection of plain colours, speckles and woodgrain finishes available in larger sheet sizes both in postforming and compact grade. These are ideally suited for cubicle use but can also be used for wall panelling, desks and any other areas requiring a larger sheet

**LABGRADE** – A range of compact grade High Pressure Laminates in 16mm thickness with a durable surface suitable for use in laboratories, schools or hospitals. The surface has been treated to protect it against high heat, chemicals and stains

**DIGITAL PRINT** – Abet can produce bespoke images printed onto laminate using a digital printing process. These can replicate a fabric, a photograph or can be of an image provided by the customer to specific requirements

**TEFOR** – Cradle to cradle product made from recycled production waste from High Pressure Laminate mixed with recycled polypropylene. It is available in a variety of colours which are suitable for both horizontal and vertical surfaces

**PRAL** – A man-made solid surface material manufactured by combining a natural mineral with an acrylic polymer. Pral products are highly durable, versatile and formable and both colours and textures run throughout the thickness of the product. Pral is available in plain coloured and speckled effects in various thicknesses

**WALKPRINT** – A range of flooring grade laminate suitable for use as access flooring. It is available in a selection of décors

### PL – Part of the Abet group

#### • PARQCOLOR (Flooring)

PL produce a wide range of commercial grade High Pressure Laminate flooring. These are available in an extensive selection of finishes ranging from exotic woods to solid colours and with a variety of complementary textures. Parqcolor is available in both plank form and tiles

#### • PARQWALL / SILENTWALL (Wall Panelling)

A versatile range of wall panelling products which are available in High Pressure Laminate bonded boards with a choice of fixing profiles. They can be used for both aesthetic and acoustic installations

#### • COESO (Postformed Compact Grade)

PL have the technology to produce postformed compact grade laminate which can be made according to customer specific requirements for a variety of applications such as shelving, fixtures and counter tops

### METALLEIDO – Part of the Abet group

Various lightweight honeycombed centred products, including Monocore and Esocore, are produced by Metalleido. These are faced with Abet High Pressure Laminate and are suitable in marine, transport and installations requiring a hard wearing, durable lightweight product

**OBBER** – Abet Ltd is the UK distributor for the full product range of Ober products. Ober specialise in real wood veneer laminates, and produce floor to ceiling solutions including sheet laminates, wall panelling, acoustic panels and flooring grade products. They are available through Abet's UK distribution network



## ABOUT ABET:

Abet Laminati manufactures the world's most innovative laminates created by the best Italian and international designers.

Abet Ltd was established in 1981 and is the UK & Ireland branch of **ABET LAMINATI**. The company has extensive warehouse and offices in London's Docklands.

**ABET LAMINATI** is one of the world's leading manufacturers of decorative laminate. From 1957, the company has grown rapidly. The prestigious awards obtained in recent years like the "Compasso d'Oro" in 1987, the European Design Award in 1990 and the "Compasso d'Oro alla Carriera" in 2001, attest to the goals reached by the company whose commercial network is now very broad: 7 subsidiaries operate in Italy; 13 commercial companies and agencies in over 90 world countries.

The output from the two factories exceed 220,000 sq metres per day, making Abet Europe's largest manufacturer of high pressure laminates.

**ABET LAMINATI** has always focused strongly on creativity and innovation in laminate manufacture. It is this design-led approach, coupled to strong links with the best Italian and International designers, that enables Abet to offer such a diverse range of laminates and such a comprehensive range of colours, styles and textures.

**ABET LAMINATI** has launched a number of innovative new products, aimed at providing the designer and specifier with the most choice. For example, Abet was the first company to produce a translucent laminate (Diafos) with three-dimensional properties. More recently, **ABET LAMINATI** has carried out extensive research to develop the technique for digital printing into laminate.



**ABET LTD** offers a RIBA approved CPD on High Pressure Laminates which covers the history of Abet, how HPL is made, various grades, maintenance and fabrication. More details can be found on our website.

**ABET LAMINATI** has a strict environmental policy and is certified to EN 14001. A copy of the company's environmental statement can be found on the website.

For further information on the following, please go to our websites at [www.abetuk.com](http://www.abetuk.com) or [www.abet.ie](http://www.abet.ie)

- Technical / Environmental / Cleaning
- Product ranges
- Case studies / projects
- Contact details
- Worldwide branches / agents

Samples and technical information is available from our sample line on **020 7473 6915**



**ABET LAMINATI** || || || ||

70 Roding Road, London Industrial Park, London E6 6LS  
Telephone: +44 (0)20 7473 6910 • Fax: +44 (0)20 7476 6935  
Email: [sales@abet.ltd.uk](mailto:sales@abet.ltd.uk) or [sales@abet.ie](mailto:sales@abet.ie)  
Web: [www.abetuk.com](http://www.abetuk.com) or [www.abet.ie](http://www.abet.ie)